



Pedestrian crossing behaviour in front of electric vehicles emitting synthetic sounds: A virtual reality experiment

S

Pavlo Bazilinskyy¹, Md Shadab Alam
Eindhoven University of Technology
Groene Loper 3, 5612AE Eindhoven, the Netherlands

Roberto Merino-Martínez
Delft University of Technology
Mekelweg 5, 2628CD Delft, the Netherlands

ABSTRACT

The increasing adoption of electric vehicles (EVs), which operate more quietly than internal combustion engine vehicles, raises concerns about their detectability, particularly for visually impaired road users. Regulations mandate exterior sound signals for EVs, ensuring minimum sound pressure levels at low speeds. However, these signals are often used in already noisy urban environments, creating a challenge: enhancing detectability without adding excessive noise pollution. This study explores the use of synthetic exterior sounds that balance high noticeability with low annoyance. An audiovisual experiment was conducted with 20 participants in 15 virtual reality scenarios featuring an EV passing in front of them. Different sound signals, including pure, intermittent, and complex tones at varying frequencies, were tested alongside two baseline cases (a diesel engine and tyre noise alone, i.e., no synthetic sound added). Participants rated sounds for annoyance, noticeability, and informativeness using 11-point ICBEN scales. Trigger measurements provided additional insights into their willingness to cross in front of the EV. The results highlight optimal sound characteristics for EVs, offering guidance on improving pedestrian safety while minimising noise pollution. By refining exterior sound design, this research contributes to the development of effective and user-friendly EV sound standards, ensuring safer and more inclusive urban environments.

1. INTRODUCTION

According to the World Health Organization [1], pedestrians account for approximately 21% of the 1.19 million global traffic fatalities annually, which is equivalent to roughly 250,000 deaths per year. A substantial proportion of these incidents occur during road crossing events [2]. Contributing factors

¹p.bazilinskyy@tue.nl (corresponding author)

include the misjudgment of crossing time, limited visibility, and visual obstructions that hinder the timely detection of approaching vehicles [3–5]. To address these challenges, augmenting auditory cues emitted by vehicles has been proposed, particularly in the context of electric vehicles (EVs), which are generally quieter than their internal combustion counterparts, and automated vehicles employing external Human–Machine Interfaces (eHMIs) [6–10].

The primary function of synthetic exterior vehicle sounds is to enhance the detectability of EVs by vulnerable road users (VRUs), particularly pedestrians, including individuals with visual or auditory impairments. Lai *et al.* [11] demonstrated that sound parameters such as intensity, temporal structure, and modulation characteristics significantly influence pedestrian detection latency.

In addition to noticeability, annoyance is a crucial factor in the design of synthetic vehicle sounds. Excessive or poorly designed sounds can contribute to environmental noise pollution in already noisy urban environments, and hence user discomfort. Prior research indicates that perceived annoyance is affected by the spectral composition, duration, and temporal repetition of auditory signals [11–13]. For instance, intermittent sounds are often judged to be more intrusive than continuous ones [14], and high-frequency components tend to be more irritating than lower-frequency sounds [15]. As such, optimal sound design should aim to maximise detectability at low vehicle speeds while minimising acoustic disturbance to urban populations [16, 17].

A further objective in EV sound design is to convey meaningful information on vehicle behaviour, such as acceleration or deceleration, to improve situational awareness among VRUs. Informative auditory cues support improved judgement of vehicle proximity and trajectory [18]. Complex acoustic signals that incorporate pitch variation and modulation patterns have been shown to enhance the informativeness of EV sounds while maintaining social acceptability [11].

1.1. Aim of Study

This preliminary study investigates the performance of various EV exterior sounds in terms of noticeability, information provided to the pedestrian, and noise annoyance. For this purpose, a virtual reality (VR) experiment was conducted in which participants rated different scenarios according to those criteria. In addition, participants were asked to press a key when they felt safe to cross the road in each scenario. This trigger press data offers additional insights into their crossing behaviour. The findings of this study aim to inform the design of exterior auditory signals for EVs that optimise both detectability and acceptability for pedestrians in urban environments. This manuscript elaborates on the preliminary study focused on perceived noise annoyance [19].

Section 2 explains the methodology used, including the synthetic sounds considered and the VR experiment. The results of this study are presented and discussed in Section 3, while the conclusions and recommendations for future work are collected in Section 4. Moreover, supplementary material is provided in Section 4.

2. METHOD

2.1. Synthetic Sounds

Table 1 lists the 15 synthetic sounds that were used in the study, which can be categorised into four groups: (1) continuous pure tones at a single frequency, (2) intermittent pure tones with alternating 500-ms on/off intervals, (3) combined tones at a principal frequency plus secondary tones at frequencies ± 90 Hz from the principal tone, and (4) double beeps at 1800–1900 Hz. The double beeps consisted of a 240 ms beep, a 10 ms pause, a 240 ms beep, and a 1000 ms pause. Furthermore, a diesel engine sound² was included as a reference case for internal combustion engine vehicles due

²<https://youtu.be/watch?v=2Y33bT1AA-E>

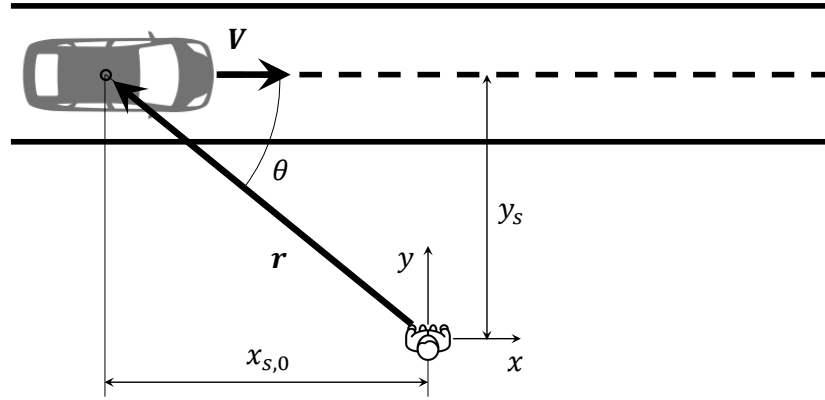


Figure 1: Scheme of the considered sound source and observer geometry [6].

to its distinctive and more familiar noise. To evaluate the sound profile of a quiet electric or automated vehicle, a stimulus containing only tyre noise³ (i.e., without any synthetic sound added) was also incorporated. All evaluated sound stimuli were combined with a background noise recording of a quiet street⁴. These sounds were previously used in an online crowdsourcing listening experiment (i.e. without VR) reported in [6].

This study considers a relatively simple sound source and observer geometry in a two-dimensional arrangement, i.e., the observer and the sound source are on the same plane; see Figure 1. For simplicity, the sound source is considered a point source with a constant velocity of 30 km/h (i.e., 8.33 m/s) in the positive x direction $\mathbf{V} = (V_x, 0)$, i.e., the source has a linear trajectory along a straight line at a distance y_s of 3 m from the observer, see Figure 1. The initial position of the sound source at is defined at $\mathbf{r}(0) = (x_{s,0}, y_s)$ and at a general instant τ_e as $\mathbf{r}(\tau_e) = (x_{s,0} + V_x\tau_e, y_s)$. For the purpose of sound signal generation, the source moved from $x_{s,0} = -60$ m to $x_s = 60$ m. Therefore, a signal length of 14.4 s was generated and used in each case. All sound stimuli (except for the case with only tyre noise) had an equivalent A-weighted sound pressure level ($L_{p,A,eq}$) of 65 dBA in the observer position. The VR environment employed enables binaural rendering of the sound accounting for the relative position of the sound source, the orientation of the participant's head, and the Doppler-shift due to relative motion. The reflection of sound on the ground or any reflecting surfaces (such as buildings) was neglected for simplicity.

Two exemplary spectrograms are provided in Figure 2 for test cases No. 12 (Combined tone, continuous, 2000 Hz) and 13 (Double beeps). For the first case, the tone at said frequency (plus the two secondary tones at ± 90 Hz) is clearly identified as the primary sound source. For the double beeps, the transient nature of this signal is also clearly observed. In both cases, broadband noise is visible, especially below 3000 Hz, mostly due to the simulated noise of the tyres on the asphalt and background noise. The motion of the source can also be observed in Figure 2 in the slight Doppler frequency shift and in the higher levels observed when the source is closer to the observer (roughly around half the recording time). The short vertical lines centred around 4000 Hz between 6 s and 13 s correspond to birds tweeting within the background noise recording.

2.2. Virtual Reality Experiment

A total of 20 participants (13 males and 7 females) with an average age of 29.35 years (SD = 4.80 years) from Eindhoven University of Technology and Delft University of Technology in the

³https://youtu.be/watch?v=X0wpizkkH_Q

⁴https://youtu.be/watch?v=6C-W_7BZBxQ

Table 1: Synthetic sounds used in the experiment.

No.	Characteristics
1	Pure tone, continuous, 350 Hz
2	Pure tone, continuous, 500 Hz
3	Pure tone, continuous, 1000 Hz
4	Pure tone, continuous, 2000 Hz
5	Pure tone, intermittent ($13 \times [500 \text{ ms emitting, } 500 \text{ ms not emitting}]$), 350 Hz
6	Pure tone, intermittent ($13 \times [500 \text{ ms emitting, } 500 \text{ ms not emitting}]$), 500 Hz
7	Pure tone, intermittent ($13 \times [500 \text{ ms emitting, } 500 \text{ ms not emitting}]$), 1000 Hz
8	Pure tone, intermittent ($13 \times [500 \text{ ms emitting, } 500 \text{ ms not emitting}]$), 2000 Hz
9	Combined tone, continuous, 350 Hz ($\pm 90 \text{ Hz}$)
10	Combined tone, continuous, 500 Hz ($\pm 90 \text{ Hz}$)
11	Combined tone, continuous, 1000 Hz ($\pm 90 \text{ Hz}$)
12	Combined tone, continuous, 2000 Hz ($\pm 90 \text{ Hz}$)
13	Double beeps ($8 \times [240 \text{ ms beep, } 10 \text{ ms pause, } 240 \text{ ms beep, } 1000 \text{ ms pause}]$), 1800–1900 Hz
14	Diesel engine
15	Tyres on asphalt

Netherlands participated in the experiment. In both universities, the experiment was conducted in a quiet environment and with the same equipment. In particular, the sessions at Delft University of Technology were performed in the Psychoacoustic Listening Laboratory (PALILA) [20], see Figure 4. The participants represented a diverse set of nationalities, including Dutch (3), Indian (3), Chinese (2), Romanian (2), Italian (2), and one each from South Africa, Greece, Ghana, Peru, Indonesia, USA, Poland, and Bulgaria. The study was approved by the Ethics Review Boards of both universities, and the participants gave their informed consent to use their data.

The VR setup was developed using Unity 2022.3.5f1 (see Section 4). Participants wore a Meta Quest 3 head-mounted display (HMD), which was connected via cable to a Lenovo Legion 81YT laptop featuring an Intel Core i7-10750H 2.60GHz CPU, 32.0 GB RAM and an NVIDIA GeForce RTX 2080 Super graphics card. The audio stimuli were reproduced using Sennheiser HD 560S headphones. Figure 3 shows the view of the participant. During each trial, the car emitting synthetic sound drove by the participant standing on the kerb of the road. The moment of passing was at 8.7 s. The street in VR was empty, with no other traffic or pedestrians. Each trial lasted for 11 s. The ambient noise (measured as $L_{p,A,eq}$) during the sessions in Eindhoven was 35.7 dBA, while in PALILA it was 13.4 dBA.

At the beginning of the experiment, participants completed a consent form and provided demographic details such as gender, age, and nationality. Subsequently, the HMD was reset to clear boundary configurations and a spatial scan history. The floor level was calibrated by the experimenter using the HMD, after which the participants were then asked to stand at a predefined location within the respective laboratory. The participants were then handed the HMD to establish their virtual boundary, ensuring an accurate recording of the participant's height and spatial location within the VR system. The HMD was then connected to the laptop via Quest Link. The Unity application was

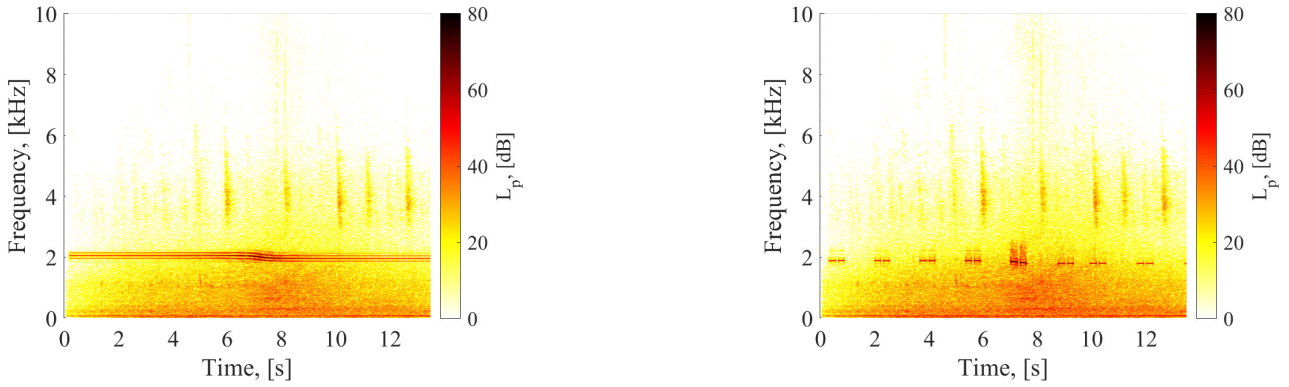


Figure 2: Spectrograms for the sound stimuli: (Left) Combined tone, continuous, 2000 Hz (case No. 12) and (Right) Double beeps (case No. 13).



Figure 3: (Left) Example view of participant in VR environment. (Right) VR experiment at Eindhoven University of Technology.

launched, and the experiment began after activating the play button within Unity.

The participants received instructions at the beginning of the experiment inside the VR, which were as follows: *“Imagine that you are a pedestrian standing on the side of the road. You will experience 15 audiovisual scenarios of a vehicle driving by you. During each scenario, press and HOLD the trigger when you feel safe to cross the road in front of the car. You can release the button and then press it again multiple times during the scenario. After each scenario, you will be asked to answer a few questions. Press the button to proceed. The experiment will start with a training scenario to familiarise yourself with the environment. During this scenario, press and HOLD the trigger when you feel safe crossing the road in front of the car. You can release the button and then press it again multiple times during the scenario. Press the button to start.”*

A preliminary training trial was conducted to allow participants to acclimate to the VR setup and practice the response task. Subsequently, the participants completed 15 experimental trials presented in random order to mitigate learning effects. During these trials, participants were asked to indicate their willingness to cross the road in front of the vehicle by following the instruction: *“Start by HOLDING the trigger button. Release the trigger button when it becomes unsafe to cross; press it again when safe to cross”*. Following each trial, including the test scenario, the participants were presented with three questions using 11-point slider scales (from 0 to 10) displayed within the VR environment. The question assessed noticeability (*“The vehicle sound was easy to notice (0 = not easy to notice, 10 = easy to notice)”*), informativeness (*“The sound gave me enough information to realise that a vehicle was approaching (0 = not enough information, 10 = enough information)”*) and annoyance (*“The vehicle sound was annoying (0 = not annoying, 10 = extremely annoying)”*). In addition to the trigger press data and the answers to the three questions, the HMD also recorded the angle of yaw of the point of view of the participants during the duration of each scenario.

Upon completion of all trials, the HMD was removed and the participants completed a post-

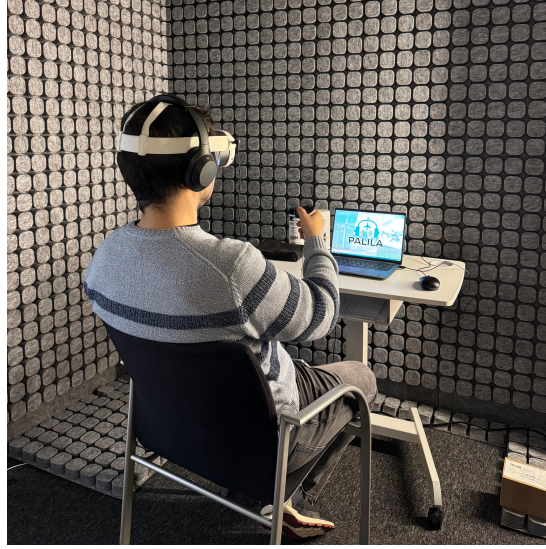


Figure 4: Example of a VR experiment in PALILA at Delft University of Technology. In practice, participants stood up during the experiment.

experiment questionnaire (see Section 4). Participants rated their experience on several dimensions using 10-point scales (1 = not at all, 10 = extremely). On average, they reported moderate levels of stress ($M = 3.35$, $SD = 1.87$) and anxiety ($M = 2.90$, $SD = 1.86$), while the realism of the experiment was rated relatively high ($M = 6.50$, $SD = 1.32$), and the overall experience received a positive evaluation ($M = 7.80$, $SD = 1.44$). Each experimental session lasted approximately 15 minutes on average. Following the session, the participants received a 10 € voucher as compensation for their time and participation.

2.3. Data Analysis

3.1 Computation of Yaw Angle of Head Movement

To investigate whether the type of synthetic sound affected the head movement of the participants, we computed the yaw angle from multiple rotation measurements. First, we averaged unit quaternions using an eigenvalue-based method introduced by Markley et al. [21], and then converted the result into Euler angles. Given a set of n unit quaternions $\{\mathbf{q}_1, \mathbf{q}_2, \dots, \mathbf{q}_n\}$, where each $\mathbf{q}_i = [w_i, x_i, y_i, z_i]$, we normalised all quaternions and ensured that they lie in the same hemisphere (i.e., have a positive dot product with a reference quaternion). This prevented antipodal quaternions from cancelling each other. We then formed a 4×4 symmetric accumulator matrix:

$$A = \frac{1}{n} \sum_{i=1}^n \mathbf{q}_i \mathbf{q}_i^T \quad (1)$$

where each \mathbf{q}_i was treated as a column vector. The matrix A is symmetric and positive semidefinite.

The average quaternion $\bar{\mathbf{q}}$ was estimated as the eigenvector corresponding to the largest eigenvalue of A :

$$\bar{\mathbf{q}} = \text{eig}_{\max}(A) \quad (2)$$

This method yielded a statistically optimal average under the assumption of small perturbations about a mean rotation. After computing the average quaternion $\bar{\mathbf{q}} = [w, x, y, z]$, we converted it into Euler angles (roll, pitch, yaw) using standard trigonometric relations. The yaw angle ψ , representing rotation about the vertical (z) axis, was extracted as:

$$\psi = \tan^{-1} \left(\frac{2(wz + xy)}{1 - 2(y^2 + z^2)} \right) \quad (3)$$

This approach provides a robust estimate of the yaw angle at each timestamp, allowing the analysis of the horizontal viewing direction between multiple samples or participants.

3.2 Composite Score for Annoyance, Informativeness, and Noticeability

To summarise the participant ratings in three perceptual dimensions *Annoyance* (A_s), *Informativeness* (I_s), and *Noticeability* (N_s), we used Sauro and Kindlund's single usability measure (SUM) approach [22], ensuring an equal contribution of each dimension after normalisation. We computed a composite score by first inverting annoyance, where Max is the maximum rating (e.g., 10):

$$A'_s = \text{Max} - A_s \quad (4)$$

We then normalised it via Z-score:

$$z(X_s) = \frac{X_s - \mu_X}{\sigma_X}, \quad X \in \{A'_s, I_s, N_s\} \quad (5)$$

And, then we computed the composite score:

$$\text{Composite}_s = \frac{1}{3} (z(A'_s) + z(I_s) + z(N_s)) \quad (6)$$

3. RESULTS

Figure 5 shows the trigger press data (participant indicating that they felt safe to cross the road) for the stimuli. A large decrease in trigger press was observed starting at about 6 s for all stimuli. This decrease is smaller for the stimulus with the sound of tyres on the asphalt, showing that the case without any added synthetic sound provides less information on the safety of crossing for pedestrians. During 6–10 s, there are notable significant differences within the stimuli, especially the pure and intermittent pure tones, compared to the sound of a diesel engine that serves as a baseline.

Figure 6 shows how participants moved their heads for all the sound stimuli. Pure continuous tones of 350 and 500 Hz are associated with the noticeable movement of the head in relation to the passing moment, where the participants looked left (denoted by the negative yaw values) during 4–5 s and then right (denoted by the positive yaw values) during 6–8 s. There were no significant ($p < 0.001$) differences within the stimuli.

The responses to the three questions asked to the participants after each VR scenario are gathered in Figure 7 per sound stimulus. As reported by Bazilinskyy et al., stimuli with a higher tonal frequency (2000 Hz) are perceived as more annoying for all types of tonal sounds (pure, combined and intermittent) [19]. However, these sounds also provide the highest noticeability with respect to other stimuli. In general, intermittent tones have relatively lower noise annoyance ratings but slightly higher noticeability, and information is provided. Therefore, their use is recommended in comparison to pure or combined tones. Interestingly, diesel engine sound, which represented conventional internal combustion engine vehicles, provides the highest amount of information and the second highest noticeability (only slightly below the intermittent tone at 2000 Hz) with a relatively low mean annoyance rating of 3.3/10, scoring the third lowest value after the case with only the tyre noise (i.e. without any synthetic sound added) and the combined tone at 350 Hz. This is likely to be due to the intrinsic semantic meaning of a diesel engine sound, which is familiar to most people and easily associated with a moving vehicle. As expected, the stimulus with only the tyre noise is perceived as the least annoying, but it also provides the least noticeability and information to pedestrians.

The pure continuous tone at 2000 Hz stands out with the highest composite score, suggesting that it was perceived as highly effective overall despite its relatively high annoyance rating. This is followed by a combined continuous tone at 2000 Hz and the pure continuous tone at 1000 Hz, both of which also achieved positive composite scores while maintaining moderate annoyance

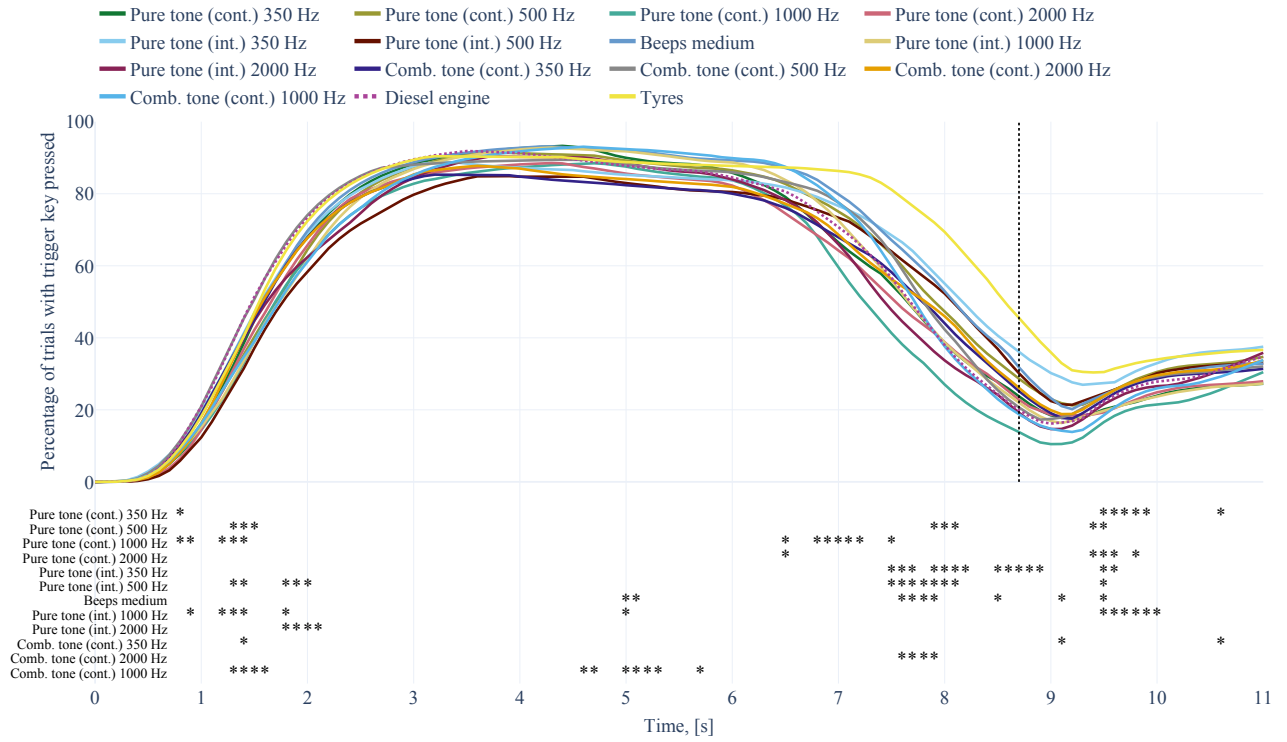


Figure 5: Percentage of the participants who pressed the key (i.e. felt safe to cross in front of the EV) as a function of time for each sound stimulus. The vertical line represents the passing moment. The asterisks at the bottom indicate significant differences with respect to 'Diesel' sound (shown as dotted line) during 100-ms periods, $p < 0.001$

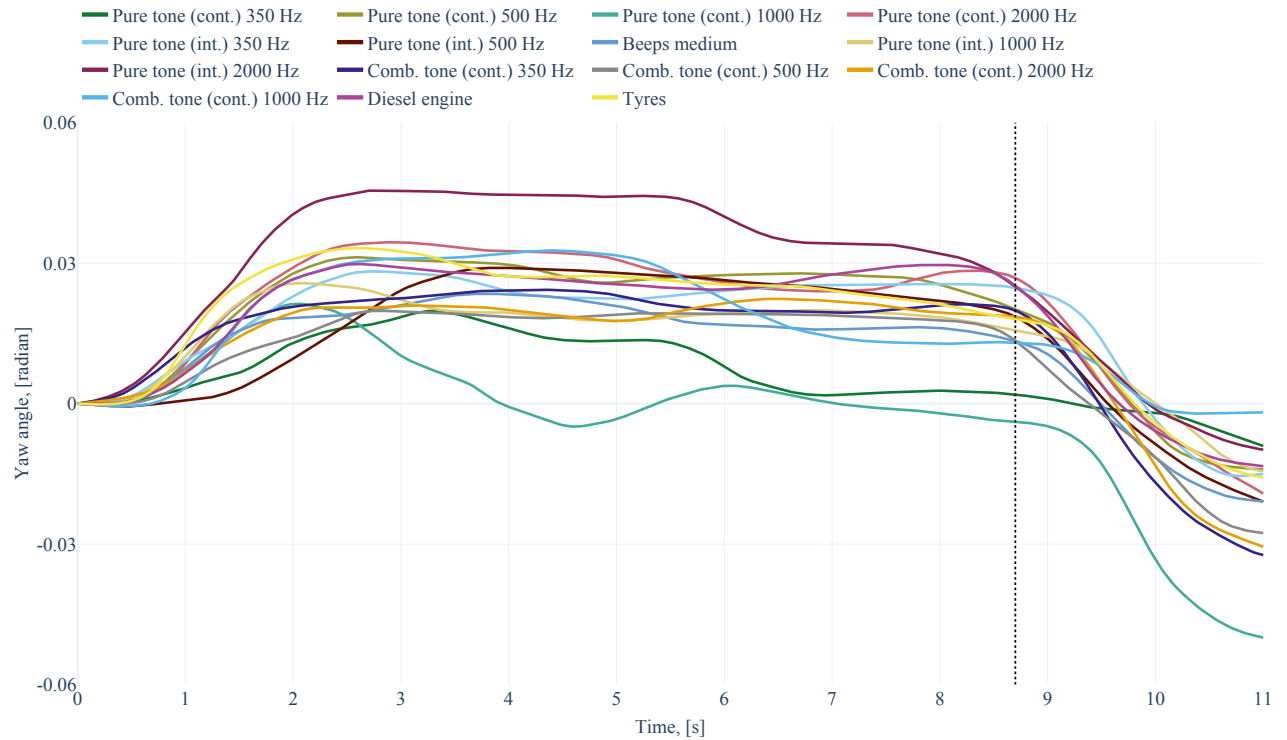


Figure 6: Mean yaw angle of head movement of pedestrians as a function of time for each sound stimulus. The value of 0 denotes participants looking perpendicular to the road, negative values correspond to the left direction (vehicle approach) and positive values show head movement to the right. The vertical line represents the passing moment.

and strong perceptual clarity. In contrast, the tyre-only condition (i.e., no added synthetic sound) shows the lowest composite score by a large margin ($M = -0.79$), reinforcing its ineffectiveness to provide pedestrians with clear auditory cues. Interestingly, some synthetic tones with moderate annoyance—such as pure continuous tones at 350 Hz and 500 Hz—yielded negative or near-zero composite scores, suggesting that high noticeability alone is not sufficient when annoyance is also high. In general, the composite scores reveal the trade-offs between effectiveness and comfort and underscore the importance of designing EV sounds that are both perceptually informative and emotionally acceptable.

4. DISCUSSION

In this research, 15 synthetic sounds produced by EVs were evaluated within a VR environment involving 20 participants from two universities in the Netherlands. The findings contribute to the exploration of the interaction between EVs and pedestrians. In particular, the use of synthetic sounds was shown to influence pedestrian decision making in road-crossing scenarios, both in terms of objective behavioural indicators (trigger press data and head movement) and subjective perception (noticeability, informativeness, and annoyance).

In accordance with the literature [6, 11], participants were more likely to cross safely and confidently when the EV emitted a synthetic sound compared to when there was only noise from

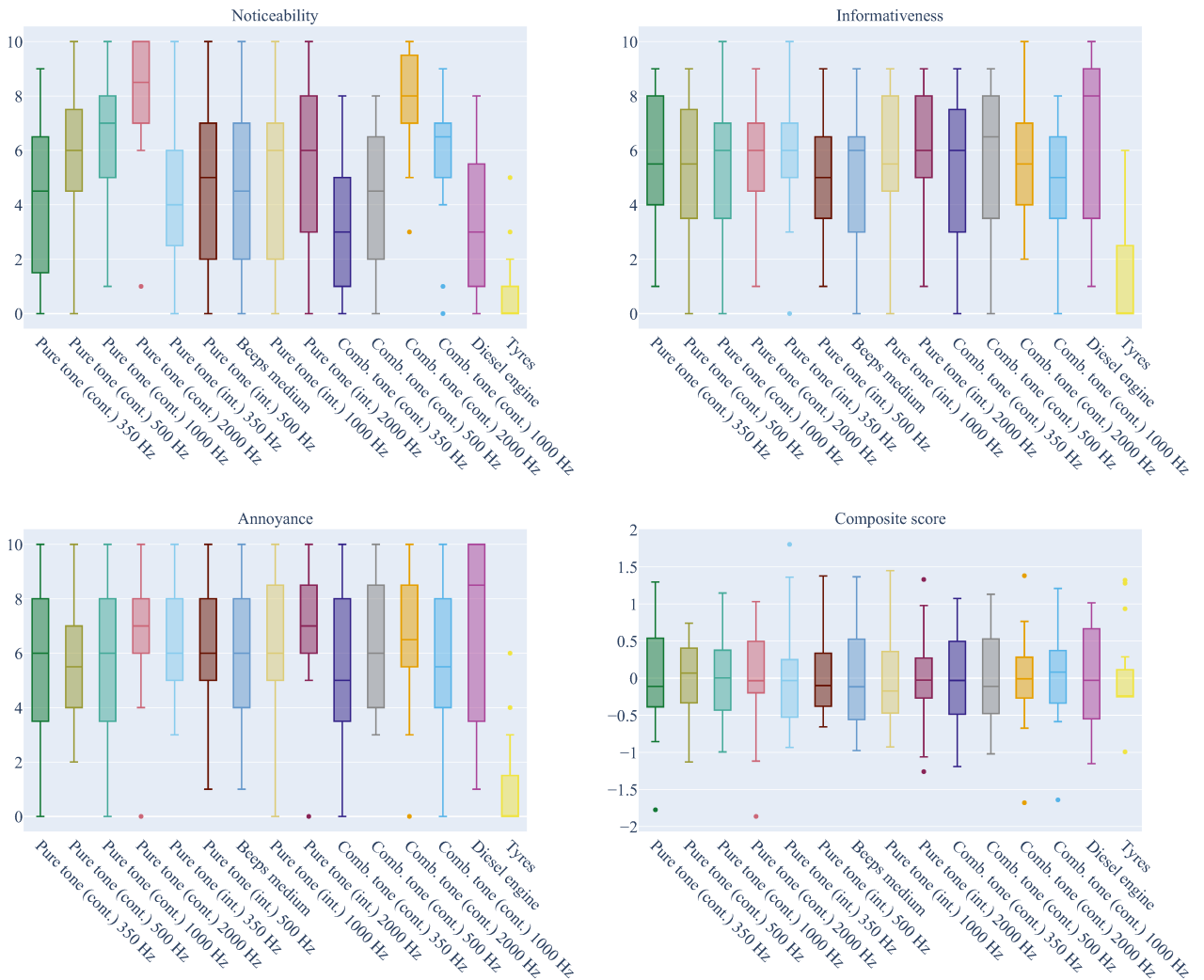


Figure 7: Box plots of the ratings for the questions regarding (top left) noticeability, (top right) informativeness, (bottom left) annoyance, and composite score (bottom right) per sound stimulus.

the tyres (i.e., no synthetic sound added). This supports a growing body of evidence that indicates that the relative quietness of EVs may pose a safety risk to VRUs, particularly in urban settings where visual distractions or obstructions are common [1, 2].

Importantly, the specific characteristics of synthetic sound had measurable effects on pedestrian crossing behaviour. Intermittent tones at 2000 Hz were rated as highly noticeable and informative, but also more annoying, aligning with findings from psychoacoustic studies on sound sharpness and modulation [11, 15]. This trade-off between functional effectiveness and perceptual comfort remains a challenge in the design of sounds emitted by EVs [6, 12, 17].

In particular, the sound of the diesel engine included as a baseline was rated highly for noticeability and informativeness, but was perceived as less annoying. This suggests that familiarity plays a crucial role in how pedestrians interpret vehicle sounds. Previous studies have highlighted the role of semantic familiarity in recognising vehicle movement and intention [11, 18], implying that leveraging familiar acoustic cues, such as the sounds of internal combustion engines, can improve perceived safety without increasing discomfort.

The observed patterns of head movement further support the efficacy of certain synthetic sounds. Low-frequency pure tones (e.g., 350–500 Hz) prompted anticipatory lateral head turns, reflecting heightened spatial awareness. These findings align with research showing that well-designed auditory signals can guide attention and support safer decision making during road crossings [8, 9].

Despite the strengths of the VR setup, some limitations must be acknowledged. The participant sample was limited to 20 individuals, primarily university-affiliated, which may reduce the generalisability of the results. Future research should include children, older adults and people with sensory impairments, groups that can rely more heavily on auditory information [3, 5]. It may be beneficial to replicate the study as a crowdsourced experiment with auditory stimuli [6, 23]. Furthermore, real-world variables such as social context, weather, and environmental distractions could influence pedestrian behaviour differently than in a controlled VR setting and should therefore be investigated. Then, the study did not evaluate the combined use of complex and intermittent tones, which may offer promising trade-offs between noticeability and annoyance. Future work should also explore multimodal approaches, such as combining visual eHMIs with auditory signals, to maximise the clarity and safety of EV interactions with pedestrians [7, 10].

In conclusion, this study provides empirical evidence that the acoustic design of EVs plays a significant role in shaping pedestrian crossing behaviour. Sound characteristics such as frequency, temporal modulation, and familiarity influence both perception and action. These findings support a human-centred approach to EV sound design and contribute to the development of evidence-based standards to improve pedestrian safety in increasingly electrified urban environments.

SUPPLEMENTARY MATERIAL

The VR environment, sounds, materials used in the experiment, analysis code, and anonymised raw data can be found at <https://doi.org/10.4121/629cae37-76e7-4b14-8693-25c96a263b4b>. A maintained version of the code is available at <https://github.com/Shaadalam9/sound-ev>.

ACKNOWLEDGEMENTS

The research presented in this article is supported and is being carried out within the project *Making sense of sound emitted by electric vehicles* (4TU.NIRICT 2023). Additionally, this publication is also part of the *Listen to the future* project (project number 20247), a part of the Veni 2022 research programme (Domain Applied and Engineering Sciences). The latter project is granted to Roberto Merino-Martinez and is (partially) financed by the Dutch Research Council (NWO).

REFERENCES

1. World Health Organization. Global status report on road safety 2023, 2023. Accessed: 03-04-

2025.

2. Robert J. Schneider. Pedestrian safety at midblock crossings. *Transportation Research Record*, 2586:39–46, 2016.
3. Jennifer A. Oxley, Brian N. Fildes, Eva Ihssen, Judith L. Charlton, and Richard H. Day. Crossing roads safely: An experimental study of age differences in gap selection by pedestrians. *Accident Analysis & Prevention*, 37(5):962–971, 2005.
4. Tova Rosenbloom. Crossing at a red light: Behaviour of individuals and groups. *Transportation Research Part F: Traffic Psychology and Behaviour*, 7(6):389–394, 2004.
5. Anne Dommes, Valérie Cavallo, and Jennifer Oxley. Functional declines as predictors of risky street-crossing decisions in older pedestrians. *Accident Analysis & Prevention*, 59:135–143, 2013.
6. Pavlo Bazilinskyy, Roberto Merino-Martinez, Elif Özcan, Dimitra Dodou, and J. C. F. De Winter. Exterior sounds for electric and automated vehicles: Loud is effective. *Applied Acoustics*, 214:109673, 2023.
7. Christopher D. Cabrall, Naohide Uchida, and Kazuo Suzuki. External vehicle sound augmentation and its role in pedestrian safety: A review. *Safety Science*, 130:104857, 2020.
8. Sourav Deb, Lesley Strawderman, David W. Carruth, Thomas M. Garrison, and Bethany Gibbons. External human-machine interfaces on automated vehicles: Effects on pedestrian crossing decisions. *Transportation Research Part F: Traffic Psychology and Behaviour*, 52:56–68, 2024.
9. Francisco Rodríguez, Tomás García, Francisco Moreno, and Daniel Sanabria. Audiovisual messages may improve the processing of traffic information and driver attention during partially automated driving: An EEG study. *Cognitive Research: Principles and Implications*, 9, 2024.
10. Edin Šabić, Daniel Henning, and Justin MacDonald. Adaptive auditory alerts for smart in-vehicle interfaces. *Proceedings of the Human Factors and Ergonomics Society Annual Meeting*, 63(1):1404–1408, 2019.
11. Chia-Yu Lai, Pei-Ling Lin, Chien-Hsiu Wang, Yu-Ting Lin, and Rong-Horng Chen. Auditory experience in vehicles: A systematic review and future research directions. *Heliyon*, 9(9):e18491, 2023.
12. Markus Bodden. Principles of active sound design for electric vehicles. *INTER-NOISE and NOISE-CON Congress and Conference Proceedings*, pages 6193–6203, 2016.
13. Alejandro Osses, Gil F. Greco, and Roberto Merino-Martinez. Considerations for the perceptual evaluation of steady-state and time-varying sounds using psychoacoustic metrics. In *10th Convention of the European Acoustics Association (Forum Acusticum), September 11 – 15 2023, Torino, Italy*.
14. Doo Young Gwak, Kiseop Yoon, Yeolwan Seong, and Soogab Lee. Application of subharmonics for active sound design of electric vehicles. *The Journal of the Acoustical Society of America*, 136(4):EL329–EL335, 2014.
15. Günther von Bismark. Sharpness as an attribute of the timbre of steady sounds. *Acta Acustica united with Acustica*, 30(3):159–172, 1974.
16. Rafal Burdzik and Ireneusz Celiński. Estimation of traffic flow using measurements of road surface vibrations. *Vibrations in Physical Systems*, 33(1):2022107, 2022.
17. Ralf Heinrichs and Markus Bodden. Sound design under the aspects of musical harmonic theory. *SAE Technical Paper*, (2003-01-1508), 2003.
18. André Fiebig. Electric vehicles get alert signals to be heard by pedestrians: Benefits and drawbacks. *Acoustics Today*, 16(4):11–19, 2020.

19. Pavlo Bazilinskyy, Md Shadab Alam, and Roberto Merino-Martinez. Psychoacoustic assessment of synthetic sounds for electric vehicles in a virtual reality experiment. In *11th Forum Acusticum Euronoise Conference, June 23 – 26 2025, Málaga, Spain, 2025*.
20. Roberto Merino-Martinez, Bieke von den Hoff, and Dick G. Simons. Design and acoustic characterization of a psychoacoustic listening facility. In *29th International Congress on Sound and Vibration (ICSV)*, Prague, Czech Republic, July 9–13 2023.
21. F Landis Markley, Yang Cheng, John L Crassidis, and Yaakov Oshman. Averaging quaternions. *Journal of Guidance, Control, and Dynamics*, 30(4):1193–1197, 2007.
22. Jeff Sauro and Erika Kindlund. A method to standardize usability metrics into a single score. In *Proceedings of the SIGCHI Conference on Human Factors in Computing Systems*, CHI '05, page 401–409, New York, NY, USA, 2005. Association for Computing Machinery.
23. Pavlo Bazilinskyy and J. C. F. De Winter. Crowdsourced measurement of reaction times to audiovisual stimuli with various degrees of asynchrony. *Human factors*, 60(8):1192–1206, 2018.